

Coding & Marking Innovation For Enhanced Productivity



Features

- Modular, well Protected IP 54 Industrial Structure.
- A Simple High Resolution Operator Interface.
- A Separate, Combined Filter Unit Ensures Quick and Easy Filter Replacement
- No Need to replace Core after time elapsed
- Quick, Easy and Hassle Free Fluid Replenishment.
- Up to 3/5 Lines of High Quality Print From Multiple data Sources.
- Separate Cabin for Electric System, Water Proof & Dust Proof Construction with a Number of Patents Granted.
- Multiple Language/ Fonts Supported
- Colorful Hi-Resolution Screen Offer Real Time Display of Status of Ink / Solvent Consumption Data.
- Comes with an Extra Long (2.7 mtr.) Print Head Umbilical Cable.

FASTJET F500 Small Character Ink Jet Printer

Fast-Jet is a global leading supplier of coding and marking solutions. The F500 has been designed to deliver the best quality code, day in and day out. The F500 is feature packed with Cost Saving features of single part service and solvent consumption saving systems. Reliability of operation with a robust stainless steel design which survives even in the harshest environment. Quality of printing is assured using the latest automatic monitoring system. The F500 gives the perfect performance with a low cost of ownership.

Imported by:

Printechs Marking & Coding Solutions (P) Ltd.
Harsh Villa, Plot No. 157, RSC Road No.50
Opposite Saiaba Temple, Gorai-II, Borivali (W)
Mumbai-400092

Marketed by:

Measurements & Controls
5 / 3397 H, 1st Floor, United Complex, Behind Silver Plaza,
I.G Road, Calicut - 4, Ph : 0495 2727381 | + 91 9846 004 716
Customer Care: + 91 8589878760 | Email:mescon@rediffmail.com

Distributed by:



Coding & Marking Innovation For Enhanced Productivity



Features

- Modular, well Protected IP 54 Industrial Structure.
- A Simple High Resolution Operator Interface.
- A Separate, Combined Filter Unit Ensures Quick and Easy Filter Replacement
- No Need to replace Core after time elapsed
- Quick, Easy and Hassle Free Fluid Replenishment.
- Up to 3/5 Lines of High Quality Print From Multiple data Sources.
- Separate Cabin for Electric System, Water Proof & Dust Proof Construction with a Number of Patents Granted.
- Multiple Language/ Fonts Supported
- Colorful Hi-Resolution Screen Offer Real Time Display of Status of Ink / Solvent Consumption Data.
- Comes with an Extra Long (2.7 mtr.) Print Head Umbilical Cable.

FASTJET F500 Small Character Ink Jet Printer

Fast-Jet is a global leading supplier of coding and marking solutions. The F500 has been designed to deliver the best quality code, day in and day out. The F500 is feature packed with Cost Saving features of single part service and solvent consumption saving systems. Reliability of operation with a robust stainless steel design which survives even in the harshest environment. Quality of printing is assured using the latest automatic monitoring system. The F500 gives the perfect performance with a low cost of ownership.

Imported by:

Printechs Marking & Coding Solutions (P) Ltd.
Harsh Villa, Plot No. 157, RSC Road No.50
Opposite Saiaba Temple, Gorai-II, Borivali (W)
Mumbai-400092

Marketed by:

Measurements & Controls
5 / 3397 H, 1st Floor, United Complex, Behind Silver Plaza,
I.G Road, Calicut - 4, Ph : 0495 2727381 | + 91 9846 004 716
Customer Care: + 91 8589878760 | Email:mescon@rediffmail.com

Distributed by:



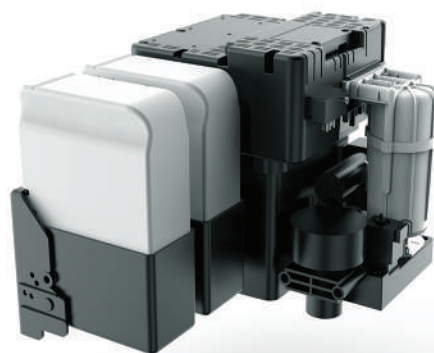
● Key Features and Benefits



Modular Ink System



Versatile Print Head



Quick, Clean,
Fluids addition

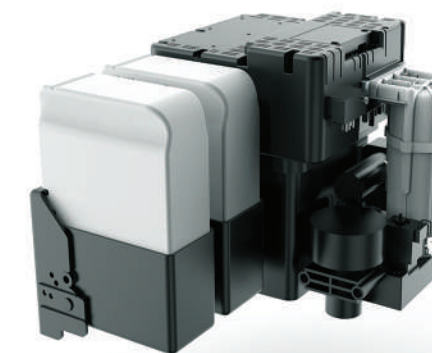
● Key Features and Benefits



Modular Ink System

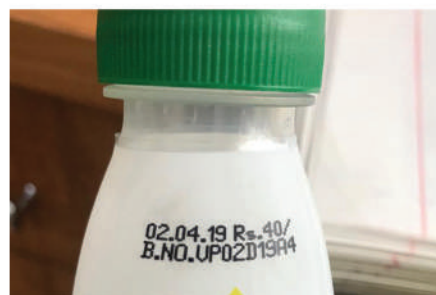


Versatile Print Head

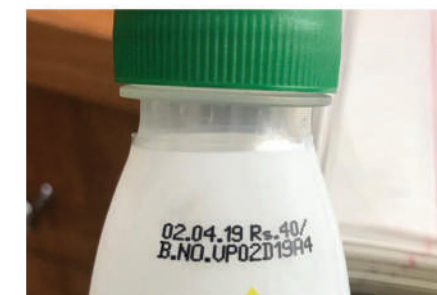


Quick, Clean,
Fluids addition

● Print Samples



● Print Samples



● Technical Specification

Umbilical	Length : 2700mm Diameter : 21mm Bending Radius : 150mm
Print Height	1.2-15mm
Max Printing Speed	320 m/meter
Printing Distance	2-15mm
Input System	Standard American Keyboard of WYSIWYG
Print Font	5x5, 7x5, 9x6, 11x8, 16x11, 24x7, 32x22
Operating Range	5-45 Deg C
User Defined Field	Bar Code, QR Code, Logos, Clock, Counter, Classes, etc
Electricity	200-240 VAC, 50HZ
Power	120-150w
Net Weight	27 kg

● Technical Specification

Umbilical	Length : 2700mm Diameter : 21mm Bending Radius : 150mm
Print Height	1.2-15mm
Max Printing Speed	320 m/meter
Printing Distance	2-15mm
Input System	Standard American Keyboard of WYSIWYG
Print Font	5x5, 7x5, 9x6, 11x8, 16x11, 24x7, 32x22
Operating Range	5-45 Deg C
User Defined Field	Bar Code, QR Code, Logos, Clock, Counter, Classes, etc
Electricity	200-240 VAC, 50HZ
Power	120-150w
Net Weight	27 kg

Measurements & Controls

CALICUT : 5/3397 H, 1st Floor, United Complex,
Behind Silver Plaza, I.G. Road, Calicut-4
Ph: 0495 2727381, 9846004716

COCHIN : Peruvelli Building, Pookatupadi Road
Edappally Toll, Cochlin 24
Ph: 8589878760

MANGALORE: Sandra Villa, Malemar Road,
Konchady, Mangalore - 573004
Ph: 9446128942

Measurements & Controls

CALICUT : 5/3397 H, 1st Floor, United Complex,
Behind Silver Plaza, I.G. Road, Calicut-4
Ph: 0495 2727381, 9846004716

COCHIN : Peruvelli Building, Pookatupadi Road
Edappally Toll, Cochlin 24
Ph: 8589878760

MANGALORE: Sandra Villa, Malemar Road,
Konchady, Mangalore - 573004
Ph: 9446128942